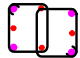
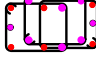







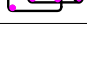


SCHEDULE OF R.C.C. COLUMN (M : 25)

COLUMN NO.	COLUMN AT GROUND & BELOW GROUND		STIRRUPS		REMARK
	COL. SIZE	VER. STEEL	CONFINE ZONE L/4 - L/4	REST	
C1	300 x 300	+ 4 \varnothing 16 4 \varnothing 12	\varnothing 8 @ 100 MM C/C	\varnothing 8 @150 MM C/C	 4 \varnothing 16 4 \varnothing 12
C2	300 x 900	+ 6 \varnothing 16 8 \varnothing 12	\varnothing 8 @ 100 MM C/C	\varnothing 8 @150 MM C/C	 6 \varnothing 16 8 \varnothing 12
C3	300 x 600	12 \varnothing 16	\varnothing 8 @ 100 MM C/C	\varnothing 8 @150 MM C/C	 12 \varnothing 16
C4	450 x 450	12 \varnothing 16	\varnothing 8 @ 100 MM C/C	\varnothing 8 @150 MM C/C	 12 \varnothing 16
C5	300 x 600	+ 4 \varnothing 16 8 \varnothing 12	\varnothing 8 @ 100 MM C/C	\varnothing 8 @150 MM C/C	 4 \varnothing 16 8 \varnothing 12
C6	300 x 450	+ 4 \varnothing 16 4 \varnothing 12	\varnothing 8 @ 100 MM C/C	\varnothing 8 @150 MM C/C	 4 \varnothing 16 4 \varnothing 12
C7	300 x 450	8 \varnothing 16	\varnothing 8 @ 100 MM C/C	\varnothing 8 @150 MM C/C	 8 \varnothing 16
C8	300 x 600	+ 6 \varnothing 20 6 \varnothing 16	\varnothing 8 @ 100 MM C/C	\varnothing 8 @150 MM C/C	 6 \varnothing 20 6 \varnothing 16
C9	300 x 600	12 \varnothing 20	\varnothing 8 @ 100 MM C/C	\varnothing 8 @150 MM C/C	 12 \varnothing 20
C10	300 x 450	10 \varnothing 16	\varnothing 8 @ 100 MM C/C	\varnothing 8 @150 MM C/C	 10 \varnothing 16

SCHEDULE OF R.C.C. FOOTING (M:25)

COLUMN NO.	P.C.C. 100MMTHK.	R.C.C.			TO SHORT SPAN	TO LONG SPAN
		L X B	D	d		
F1	1700 x 1700	1400 x 1400	300	—	BOT- \varnothing 10 @ 150 MM C/C TOP- \varnothing 10 @ 200 MM C/C	BOT- \varnothing 10 @ 150 MM C/C TOP- \varnothing 10 @ 200 MM C/C
F2	2700 x 2500	2400 x 2200	600	—	BOT- \varnothing 10 @ 100 MM C/C TOP- \varnothing 10 @ 200 MM C/C	BOT- \varnothing 10 @ 100 MM C/C TOP- \varnothing 10 @ 200 MM C/C
F3	2300 x 2100	2000 x 1800	500	—	BOT- \varnothing 10 @ 125 MM C/C TOP- \varnothing 10 @ 200 MM C/C	BOT- \varnothing 10 @ 125 MM C/C TOP- \varnothing 10 @ 200 MM C/C
F4	1950 x 2100	1650 x 1800	500	—	BOT- \varnothing 10 @ 150 MM C/C TOP- \varnothing 10 @ 300 MM C/C	BOT- \varnothing 10 @ 150 MM C/C TOP- \varnothing 10 @ 300 MM C/C
F5	1800 x 2100	1500 x 1800	500	—	BOT- \varnothing 10 @ 150 MM C/C TOP- \varnothing 10 @ 250 MM C/C	BOT- \varnothing 10 @ 150 MM C/C TOP- \varnothing 10 @ 250 MM C/C
F6	1900 x 1900	1600 x 1600	450	—	BOT- \varnothing 10 @ 150 MM C/C TOP- \varnothing 10 @ 250 MM C/C	BOT- \varnothing 10 @ 150 MM C/C TOP- \varnothing 10 @ 250 MM C/C
F7	2000 x 2300	1700 x 2000	500	—	BOT- \varnothing 10 @ 125 MM C/C TOP- \varnothing 10 @ 250 MM C/C	BOT- \varnothing 10 @ 125 MM C/C TOP- \varnothing 10 @ 250 MM C/C
F7A (COMBINE)	5700 x 2900	5400 x 2600	550	—	BOT- \varnothing 10 @ 150 MM C/C TOP- \varnothing 10 @ 250 MM C/C	BOT- \varnothing 10 @ 150 MM C/C TOP- \varnothing 10 @ 250 MM C/C
F9	2200 x 2500	1900 x 2200	550	—	BOT- \varnothing 10 @ 125 MM C/C TOP- \varnothing 10 @ 200 MM C/C	BOT- \varnothing 10 @ 125 MM C/C TOP- \varnothing 10 @ 200 MM C/C
F10	2400 x 2700	2100 x 2400	550	—	BOT- \varnothing 10 @ 115 MM C/C TOP- \varnothing 10 @ 250 MM C/C	BOT- \varnothing 10 @ 115 MM C/C TOP- \varnothing 10 @ 250 MM C/C
F11	2100 x 2100	1800 x 1800	450	—	BOT- \varnothing 10 @ 150 MM C/C TOP- \varnothing 10 @ 300 MM C/C	BOT- \varnothing 10 @ 150 MM C/C TOP- \varnothing 10 @ 300 MM C/C
F12	2100 x 2200	1800 x 1900	500	—	BOT- \varnothing 10 @ 125 MM C/C TOP- \varnothing 10 @ 250 MM C/C	BOT- \varnothing 10 @ 125 MM C/C TOP- \varnothing 10 @ 250 MM C/C

NOTES :

- THIS DRAWING IS THE PROPERTY OF ARCHITECTS ARG Creation Pvt. Ltd. AND CANNOT BE REPRODUCED, TRACED OR USED FOR ANY PURPOSE OTHER THAN THE SPECIFIC JOB AGAINST & FOR WHICH IT IS ISSUED, WITHOUT THEIR PRIOR WRITTEN PERMISSION.
- THE CONTRACTOR MUST VERIFY ALL THE DIMENSIONS ON THE JOB AND REPORT ANY DISCREPANCIES TO THE ARCHITECTS.
- DONOT SCALE THE DRAWING.
- FOLLOW FIGURED DIMENSIONS ONLY.
- FOR BUILDING LAYOUT, REFER ARCHITECTURAL DRAWINGS AND CORRESPONDING SERVICES DRAWINGS.
- THIS DRAWING SUPERSEDS ALL DRAWINGS.
- PLEASE REFER DRAWING NO: STR-01 & STR-02 OF THIS PROJECT

NO.	DATE	REMARKS
R2	-	-
R1		

R E V I S I O N

TENDER COPY

OWNER :
SPORTS AUTHORITY OF GUJARAT - PIU
PROJECT : CONSTRUCTION OF NAGAR PALIKA LIBRARY,AT -THARA ,DIST - BANASKANTHA

CONSULTANT :



DHARMENDRA B. SHAH

B.E. (civil), AMIE, FIV, MACI, CE, PVA (I), IIV.
OFF :- "GAUTAM SMRUTI", JAIN SOCIETY, NR.FUVARA,
NAVSARI. 396445.
PHONE :- (O.) 02637 237537.(M.) 098251 18824
MAIL ID: steelcrete2006@gmail.com



architecture . interiors . events

ARG Creation Pvt. Ltd.

101-102 Maurya Atria, Opp. Alithi Dining Hall, Judge's Bungalow Road, Ahmedabad - 380 015
Tel: +91-079-2687 2377, +91-079-3511 7677, E-mail: argcreation@hotmail.com

TITLE:- THARA LIBRARY SCHEDULE OF R.C.C COLUMN & FOOTING DRAWING	
STRUCTURAL DRAWING	DRG. NO. STR-01 R0
DATE:- 17-04-2026	
SCALE:- N.T.S	
DRAWN BY :- VIPUL	
CHECKED BY :- VIPUL	



1. THIS DRAWING IS THE PROPERTY OF ARCHITECTS **ARG Creation Pvt. Ltd.** AND CANNOT BE REPRODUCED, TRACED OR USED FOR ANY PURPOSE OTHER THAN THE SPECIFIC JOB AGAINST & FOR WHICH IT IS ISSUED, WITHOUT THEIR PRIOR WRITTEN PERMISSION.
2. THE CONTRACTOR MUST VERIFY ALL THE DIMENSIONS ON THE JOB AND REPORT ANY DISCREPANCIES TO THE ARCHITECTS.
3. DONOT SCALE THE DRAWING.
4. FOLLOW FIGURED DIMENSIONS ONLY.
5. FOR BUILDING LAYOUT, REFER ARCHITECTURAL DRAWINGS AND CORRESPONDING SERVICES DRAWINGS.
6. THIS DRAWING SUPERSEDES ALL DRAWINGS.
7. PLEASE REFER DRAWING NO: STR-01 & STR-02 OF THIS PROJECT

R E V I S I O N

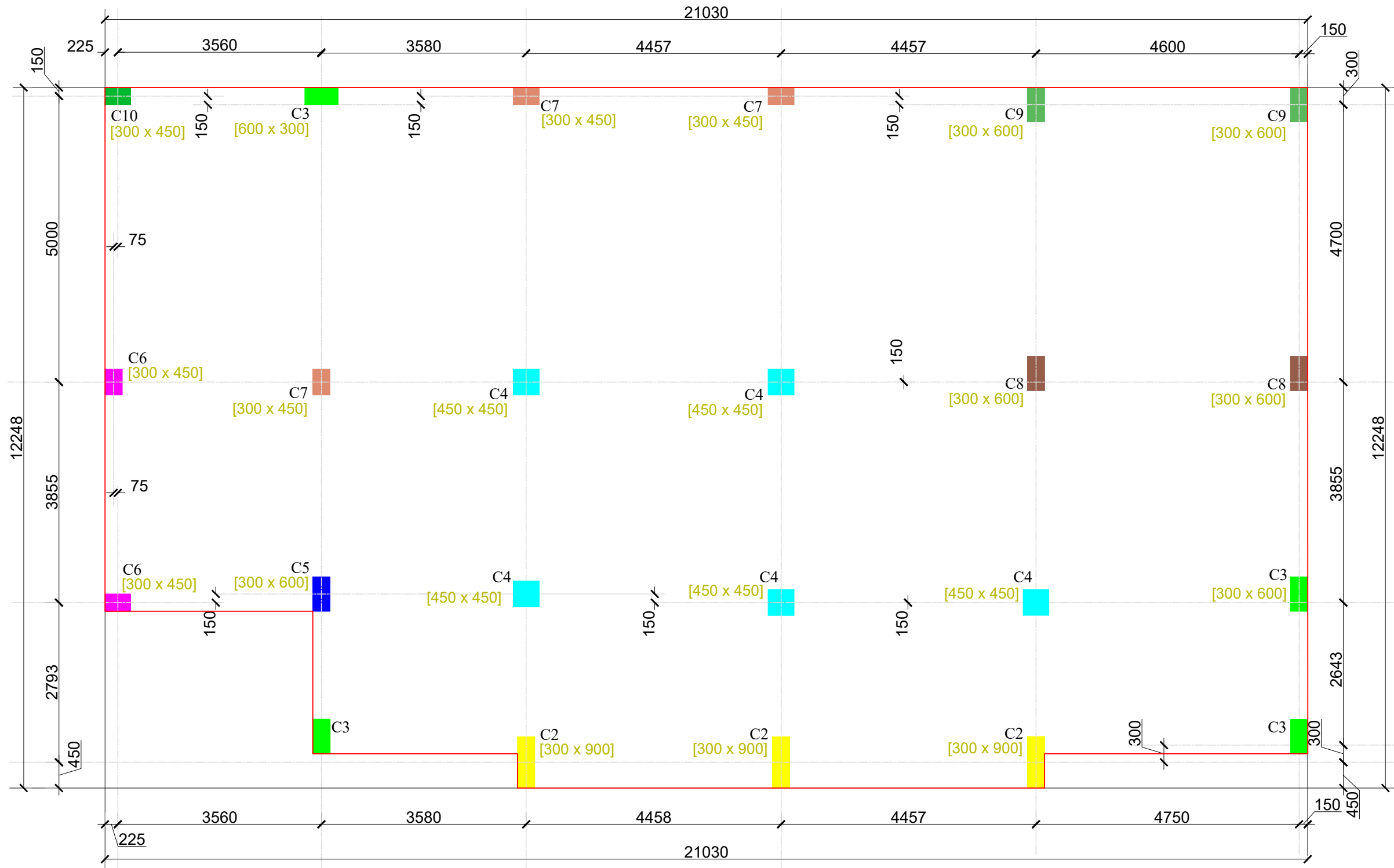
OWNER :	SPORTS AUTHORITY OF GUJARAT - PIU
PROJECT :	CONSTRUCTION OF NAGAR PALIKA LIBRARY,AT -THARA ,DIST - BANASKANTHA


STEELCRETE
 Consulting Structural Engineer & Govt. App. Valuer

B.E. (civil), AMIE, FIV, MACI, CE, PVA (I), IIV.
OFF :- "GAUTAM SMRUTI", JAIN SOCIETY, NR.FUVARA,
NAVSARI. 396445.
PHONE :- (O.) 02637 237537.(M.) 098251 18824
MAIL ID: steelcrete2006@gmail.com

101-102 Maurya Atria, Opp. Atithi Dining Hall, Judge's Bungalow Road, Ahmedabad - 380 015
Tel: +91-079-2687 2377, +91-079-3511 7677, E-mail: argcreation@hotmail.com

R0



centerline plan

- NOTES :
1. THIS DRAWING IS THE PROPERTY OF ARCHITECTS ARG Creation Pvt. Ltd. AND CANNOT BE REPRODUCED, TRACED OR USED FOR ANY PURPOSE OTHER THAN THE SPECIFIC JOB AGAINST & FOR WHICH IT IS ISSUED, WITHOUT THEIR PRIOR WRITTEN PERMISSION.
 2. THE CONTRACTOR MUST VERIFY ALL THE DIMENSIONS ON THE JOB AND REPORT ANY DISCREPANCIES TO THE ARCHITECTS.
 3. DONOT SCALE THE DRAWING.
 4. FOLLOW FIGURED DIMENSIONS ONLY.
 5. FOR BUILDING LAYOUT, REFER ARCHITECTURAL DRAWINGS AND CORRESPONDING SERVICES DRAWINGS.
 6. THIS DRAWING SUPERSEDES ALL DRAWINGS.
 7. PLEASE REFER DRAWING NO: STR-01 & STR-02 OF THIS PROJECT

NO.	DATE	REMARKS
R2	-	-
R1	-	-

R E V I S I O N

TENDER COPY

OWNER :
SPORTS AUTHORITY OF GUJARAT - PIU

PROJECT : CONSTRUCTION OF NAGAR PALIKA
LIBRARY,AT -THARA ,DIST - BANASKANTHA

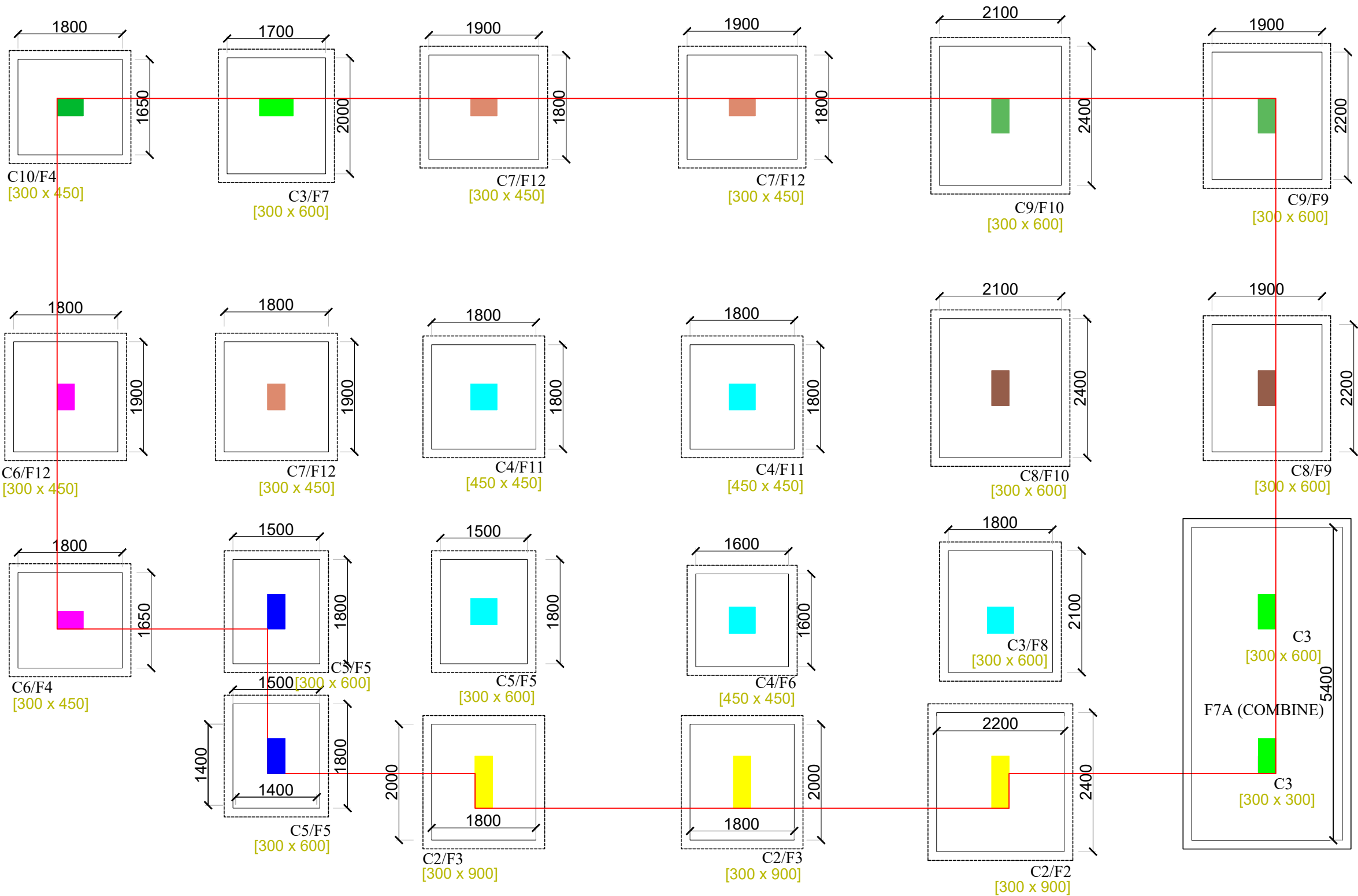
CONSULTANT :

STEELCRETE
Consulting Structural Engineer & Govt. App. Valuer

DHARMENDRA B. SHAH
B.E. (civil), AMIE, FIV, MACI, CE, PVA (I), IIV.
OFF :- "GAUTAM SMRUTI", JAIN SOCIETY, NR.FUVARA,
NAVSARI. 396445.
PHONE :- (O.) 02637 237537.(M.) 098251 18824
MAIL ID: steelcrete2006@gmail.com

ARG
architecture . interiors . events
ARG Creation Pvt. Ltd.
101-102 Maurya Atria, Opp. Alithi Dining Hall, Judge's Bungalow Road, Ahmedabad - 380 015
Tel: +91-079-2687 2377, +91-079-3511 7677, E-mail: argcreation@hotmail.com

TITLE:- THARA LIBRARY	
DETAIL OF R.C.C COLUMN CENTERLINE DRAWING	
STRUCTURAL DRAWING	DRG. NO.
DATE:- 17-04-2026	STR-03 R0
SCALE:- N.T.S	
DRAWN BY :- VIPUL	
CHECKED BY :- VIPUL	



footings plan

NOTES :

1. THIS DRAWING IS THE PROPERTY OF ARCHITECTS ARG Creation Pvt. Ltd. AND CANNOT BE REPRODUCED, TRACED OR USED FOR ANY PURPOSE OTHER THAN THE SPECIFIC JOB AGAINST & FOR WHICH IT IS ISSUED, WITHOUT THEIR PRIOR WRITTEN PERMISSION.

2. THE CONTRACTOR MUST VERIFY ALL THE DIMENSIONS ON THE JOB AND REPORT ANY DISCREPANCIES TO THE ARCHITECTS.

3. DONOT SCALE THE DRAWING.

4. FOLLOW FIGURED DIMENSIONS ONLY.

5. FOR BUILDING LAYOUT, REFER ARCHITECTURAL DRAWINGS AND CORRESPONDING SERVICES DRAWINGS.

6. THIS DRAWING SUPERSEDES ALL DRAWINGS.

7. PLEASE REFER DRAWING NO. STR-01 & STR-02 OF THIS PROJECT

NO.	DATE	REMARKS
R2	-	-
R1	-	-

REVISION

TENDER COPY

OWNER :

SPORTS AUTHORITY OF GUJARAT - PIU

PROJECT : CONSTRUCTION OF NAGAR PALIKA LIBRARY,AT -THARA ,DIST - BANASKANTHA

CONSULTANT :

STEELCRETE

Consulting Structural Engineer & Govt. App. Valuer

DHARMENDRA B. SHAH

B.E.(civil), AMIE, FIV, MACI, CE, PVA (I), IIV.

OFF :- "GAUTAM SMRUTI", JAIN SOCIETY, NR.FUVARA, NAVSARI. 396445.

PHONE :- (O.) 02637 237537.(M.) 098251 18824

MAIL ID: steelcrete2006@gmail.com

ARG

architecture . interiors . events

ARG Creation Pvt. Ltd.

101-102 Maurya Atria, Opp. Alithi Dining Hall, Judge's Bungalow Road, Ahmedabad - 380 015

Tel: +91-079-2687 2377, +91-079-3511 7677, E-mail: argcreation@hotmail.com

TITLE:- THARA LIBRARY

DETAIL OF R.C.C COLUMN FOOTING DRAWING

STRUCTURAL DRAWING

DATE:- 14-04-2026

SCALE:- N.T.S

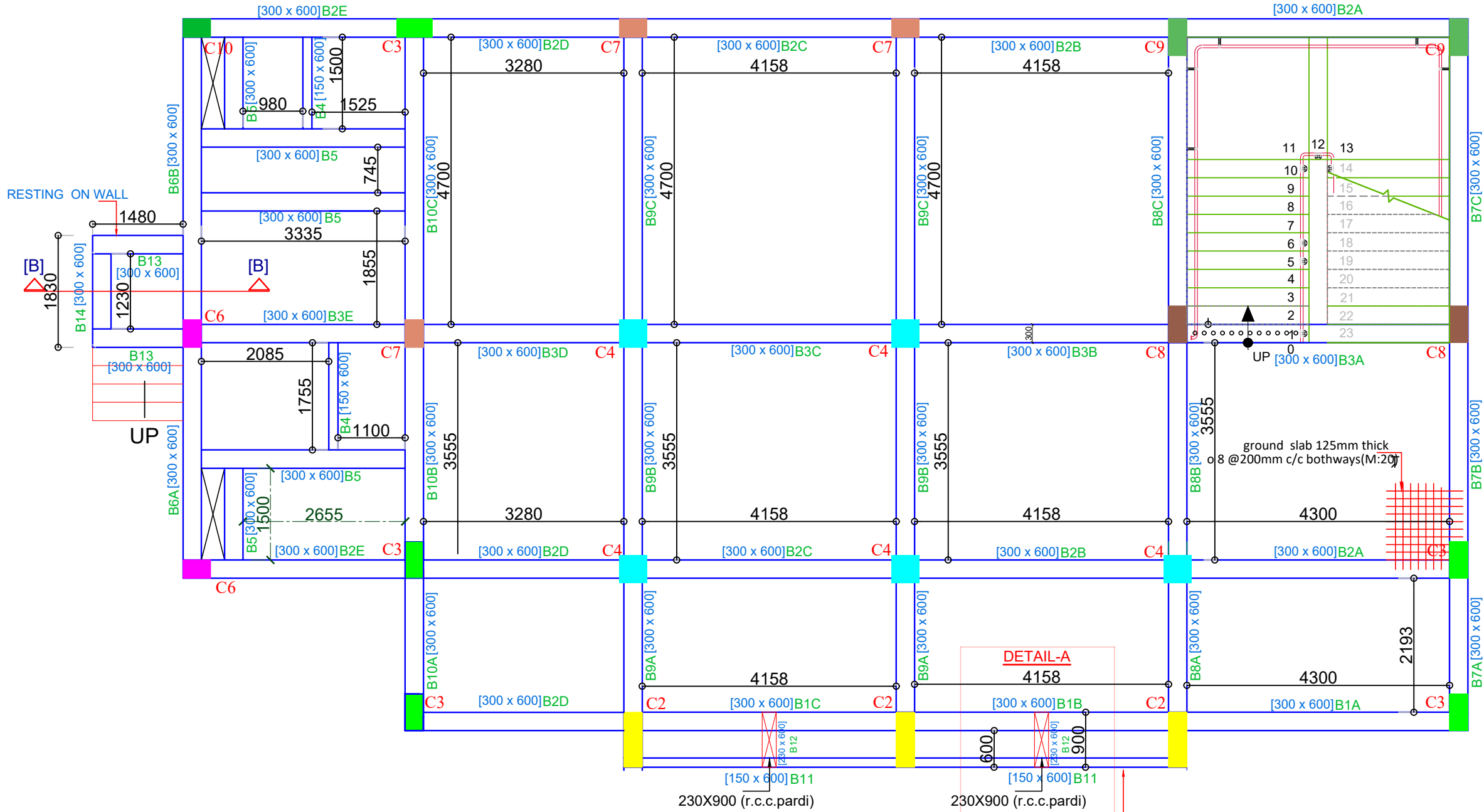
DRAWN BY :- VIPUL

CHECKED BY :- VIPUL

DRG. NO.

STR-04

R0



- NOTES :
1. THIS DRAWING IS THE PROPERTY OF ARCHITECTS ARG Creation Pvt. Ltd. AND CANNOT BE REPRODUCED, TRACED OR USED FOR ANY PURPOSE OTHER THAN THE SPECIFIC JOB AGAINST & FOR WHICH IT IS ISSUED, WITHOUT THEIR PRIOR WRITTEN PERMISSION.
 2. THE CONTRACTOR MUST VERIFY ALL THE DIMENSIONS ON THE JOB AND REPORT ANY DISCREPANCIES TO THE ARCHITECTS.
 3. DONOT SCALE THE DRAWING.
 4. FOLLOW FIGURED DIMENSIONS ONLY.
 5. FOR BUILDING LAYOUT, REFER ARCHITECTURAL DRAWINGS AND CORRESPONDING SERVICES DRAWINGS.
 6. THIS DRAWING SUPERSEDES ALL DRAWINGS.
 7. PLEASE REFER DRAWING NO: STR-01 & STR-02 OF THIS PROJECT

NO.	DATE	REMARKS
R2	-	-
R1		

REVISION

TENDER COPY

OWNER :
SPORTS AUTHORITY OF GUJARAT - PIU

PROJECT : CONSTRUCTION OF NAGAR PALIKA LIBRARY,AT -THARA ,DIST - BANASKANTHA

CONSULTANT :



Consulting Structural Engineer & Govt. App. Valuer

DHARMENDRA B. SHAH

B.E. (civil), AMIE, FIV, MACI, CE, PVA (I), IIV.

OFF :- "GAUTAM SMRUTI", JAIN SOCIETY, NR.FUVARA, NAVSARI. 396445.

PHONE :- (O.) 02637 237537.(M.) 098251 18824

MAIL ID: steelcrete2006@gmail.com

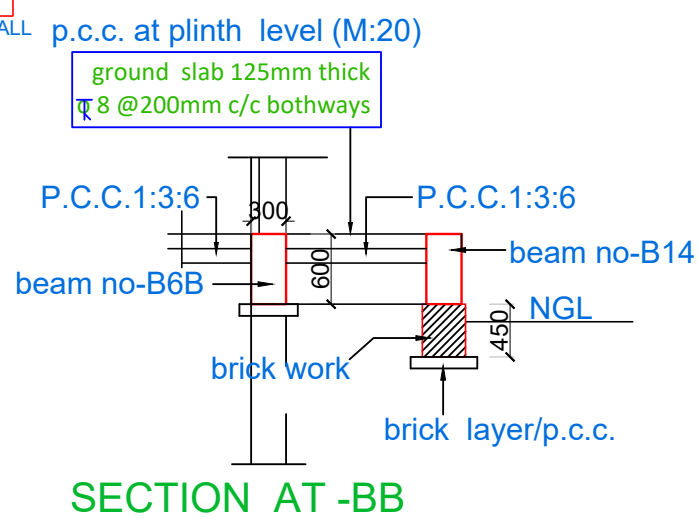
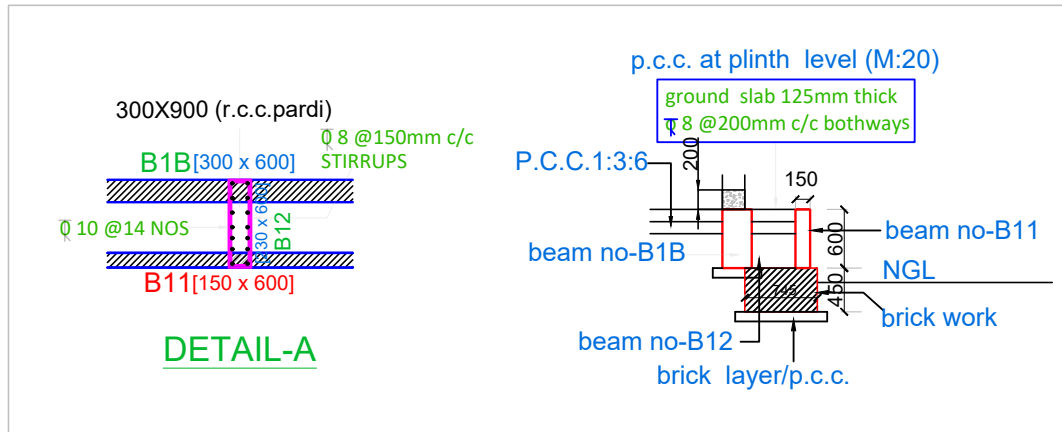
ARG

architecture . interiors . events

ARG Creation Pvt. Ltd.

101-102 Maurya Atria, Opp. Atithi Dining Hall, Judge's Bungalow Road, Ahmedabad - 380 015
Tel: +91-079-2687 2377, +91-079-3511 7677, E-mail: argcreation@hotmail.com

TITLE:- THARA LIBRARY	
DETAIL OF R.C.C GROUND & PLINTH BEAM DRAWING	
STRUCTURAL DRAWING	DRG. NO.
DATE:- 17-04-2026	STR-05 R0
SCALE:- N.T.S	
DRAWN BY :- VIPUL	
CHECKED BY :- VIPUL	



SCHEDULE OF GROUND & PLINTH BEAM :-(M:25)										
BEAM MARKED	SIZE		REINFORCEMENT AT BOTTOM		REINFORCEMENT AT TOP			STIRRUPS		REMARK
	WIDTH B mm	DEPTH D mm	STRAIGHT	EXTRA AT MID SPAN(L/2)	STRAIGHT	EXTRA TOP L/4 (LEFT).	EXTRA TOP L/4 (RIGHT).	AT SUPPORT (S1)	AT SPAN (S2)	
B1A	300	600	3 \varnothing 12	————	3 \varnothing 12	2 \varnothing 12	2 \varnothing 12	\varnothing 8 @100MMC/C	\varnothing 8 @150MMC/C	————
B1B	300	600	3 \varnothing 12	————	3 \varnothing 12	2 \varnothing 12	2 \varnothing 12	\varnothing 8 @100MMC/C	\varnothing 8 @150MMC/C	————
B1C	300	600	3 \varnothing 12	————	3 \varnothing 12	2 \varnothing 12	2 \varnothing 12	\varnothing 8 @100MMC/C	\varnothing 8 @150MMC/C	————
B2A	300	600	3 \varnothing 12	————	3 \varnothing 12	2 \varnothing 12	2 \varnothing 12	\varnothing 8 @100MMC/C	\varnothing 8 @150MMC/C	————
B2B	300	600	3 \varnothing 12	————	3 \varnothing 12	2 \varnothing 12	2 \varnothing 12	\varnothing 8 @100MMC/C	\varnothing 8 @150MMC/C	————
B2C	300	600	3 \varnothing 12	————	3 \varnothing 12	2 \varnothing 12	2 \varnothing 12	\varnothing 8 @100MMC/C	\varnothing 8 @150MMC/C	————
B2D	300	600	3 \varnothing 12	————	3 \varnothing 12	2 \varnothing 12	2 \varnothing 12	\varnothing 8 @100MMC/C	\varnothing 8 @150MMC/C	————
B2E	300	600	3 \varnothing 12	2 \varnothing 12	3 \varnothing 12	2 \varnothing 12	2 \varnothing 12	\varnothing 8 @100MMC/C	\varnothing 8 @150MMC/C	————
B3A	300	600	3 \varnothing 12	2 \varnothing 12	3 \varnothing 12	3 \varnothing 12	3 \varnothing 12	\varnothing 8 @100MMC/C	\varnothing 8 @150MMC/C	————
B3B	300	600	3 \varnothing 12	————	3 \varnothing 12	3 \varnothing 12	2 \varnothing 12	\varnothing 8 @100MMC/C	\varnothing 8 @150MMC/C	————
B3C	300	600	3 \varnothing 12	————	3 \varnothing 12	2 \varnothing 12	2 \varnothing 12	\varnothing 8 @100MMC/C	\varnothing 8 @150MMC/C	————
B3D	300	600	3 \varnothing 12	2 \varnothing 12	3 \varnothing 12	2 \varnothing 12	2 \varnothing 12	\varnothing 8 @100MMC/C	\varnothing 8 @150MMC/C	————
B3E	300	600	3 \varnothing 12	2 \varnothing 12	3 \varnothing 12	2 \varnothing 12	2 \varnothing 12	\varnothing 8 @100MMC/C	\varnothing 8 @150MMC/C	————
B4	150	600	2 \varnothing 12	————	2 \varnothing 12	————	————	\varnothing 8 @150MMC/C	\varnothing 8 @150MMC/C	————
B5	300	600	3 \varnothing 12	————	3 \varnothing 12	————	————	\varnothing 8 @125MMC/C	\varnothing 8 @125MMC/C	————
B6A	300	600	3 \varnothing 12	————	3 \varnothing 12	2 \varnothing 12	2 \varnothing 16	\varnothing 8 @100MMC/C	\varnothing 8 @150MMC/C	————
B6B	300	600	3 \varnothing 12	2 \varnothing 12	3 \varnothing 12	2 \varnothing 16	2 \varnothing 12	\varnothing 8 @100MMC/C	\varnothing 8 @150MMC/C	————
B7A	300	600	2 \varnothing 16 + 1 \varnothing 12	————	2 \varnothing 16 + 1 \varnothing 12	2 \varnothing 12	2 \varnothing 12	\varnothing 8 @100MMC/C	\varnothing 8 @150MMC/C	————
B7B	300	600	2 \varnothing 16 + 1 \varnothing 12	————	2 \varnothing 16 + 1 \varnothing 12	2 \varnothing 12	2 \varnothing 16	\varnothing 8 @100MMC/C	\varnothing 8 @150MMC/C	————
B7C	300	600	2 \varnothing 16 + 1 \varnothing 12	————	2 \varnothing 16 + 1 \varnothing 12	2 \varnothing 16	2 \varnothing 12	\varnothing 8 @100MMC/C	\varnothing 8 @150MMC/C	————
B8A	300	600	3 \varnothing 16	————	3 \varnothing 16	3 \varnothing 16	3 \varnothing 16	\varnothing 8 @100MMC/C	\varnothing 8 @100MMC/C	————
B8B	300	600	3 \varnothing 16	————	3 \varnothing 16	3 \varnothing 16	3 \varnothing 12	\varnothing 8 @100MMC/C	\varnothing 8 @150MMC/C	————
B8C	300	600	3 \varnothing 16	————	3 \varnothing 16	3 \varnothing 12	2 \varnothing 12	\varnothing 8 @100MMC/C	\varnothing 8 @150MMC/C	————
B9A	300	600	2 \varnothing 16 + 1 \varnothing 12	————	2 \varnothing 16 + 1 \varnothing 12	2 \varnothing 16	2 \varnothing 12	\varnothing 8 @100MMC/C	\varnothing 8 @150MMC/C	————
B9B	300	600	2 \varnothing 16 + 1 \varnothing 12	————	3 \varnothing 12	2 \varnothing 12	2 \varnothing 12	\varnothing 8 @100MMC/C	\varnothing 8 @150MMC/C	————
B9C	300	600	2 \varnothing 16 + 1 \varnothing 12	————	3 \varnothing 12	2 \varnothing 12	2 \varnothing 12	\varnothing 8 @100MMC/C	\varnothing 8 @150MMC/C	————
B10A	300	600	2 \varnothing 16 + 1 \varnothing 12	————	2 \varnothing 16 + 1 \varnothing 12	2 \varnothing 16	2 \varnothing 16	\varnothing 8 @100MMC/C	\varnothing 8 @100MMC/C	————
B10B	300	600	2 \varnothing 16 + 1 \varnothing 12	————	2 \varnothing 16 + 1 \varnothing 12	2 \varnothing 16	2 \varnothing 16	\varnothing 8 @100MMC/C	\varnothing 8 @100MMC/C	————
B11	150	600	2 \varnothing 16	————	2 \varnothing 12	————	————	\varnothing 8 @100MMC/C	\varnothing 8 @100MMC/C	RESTING ON WALL FOUNDATION
B12	230	600	3 \varnothing 16	————	4 \varnothing 16	————	————	\varnothing 8 @100MMC/C	\varnothing 8 @100MMC/C	RESTING ON WALL FOUNDATION
B13	300	600	2 \varnothing 16	————	2 \varnothing 16	————	————	\varnothing 8 @100MMC/C	\varnothing 8 @100MMC/C	RESTING ON WALL FOUNDATION
B14	300	600	2 \varnothing 16	————	2 \varnothing 16	————	————	\varnothing 8 @100MMC/C	\varnothing 8 @100MMC/C	RESTING ON WALL FOUNDATION

SCHEDULE OF PLINTH SLAB :-(M:20)					
SLAB MARKED	SLAB THICK.	SLAB TYPE	MAIN STEEL	DISTRIBUTION STEEL	REMARKS
S1	125	TWO WAY	\varnothing 8 MM @ 200MM C/C	\varnothing 8 MM @ 200MM C/C	————

- NOTES :
- THIS DRAWING IS THE PROPERTY OF ARCHITECTS ARG Creation Pvt. Ltd. AND CANNOT BE REPRODUCED, TRACED OR USED FOR ANY PURPOSE OTHER THAN THE SPECIFIC JOB AGAINST & FOR WHICH IT IS ISSUED, WITHOUT THEIR PRIOR WRITTEN PERMISSION.
 - THE CONTRACTOR MUST VERIFY ALL THE DIMENSIONS ON THE JOB AND REPORT ANY DISCREPANCIES TO THE ARCHITECTS.
 - DONOT SCALE THE DRAWING.
 - FOLLOW FIGURED DIMENSIONS ONLY.
 - FOR BUILDING LAYOUT, REFER ARCHITECTURAL DRAWINGS AND CORRESPONDING SERVICES DRAWINGS.
 - THIS DRAWING SUPERSEDS ALL DRAWINGS.
 - PLEASE REFER DRAWING NO: STR-01 & STR-02 OF THIS PROJECT

NO.	DATE	REMARKS
R2	-	-
R1		

R E V I S I O N
TENDER COPY

OWNER :
SPORTS AUTHORITY OF GUJARAT - PIU
PROJECT : CONSTRUCTION OF NAGAR PALIKA LIBRARY,AT -THARA ,DIST - BANASKANTHA

CONSULTANT :

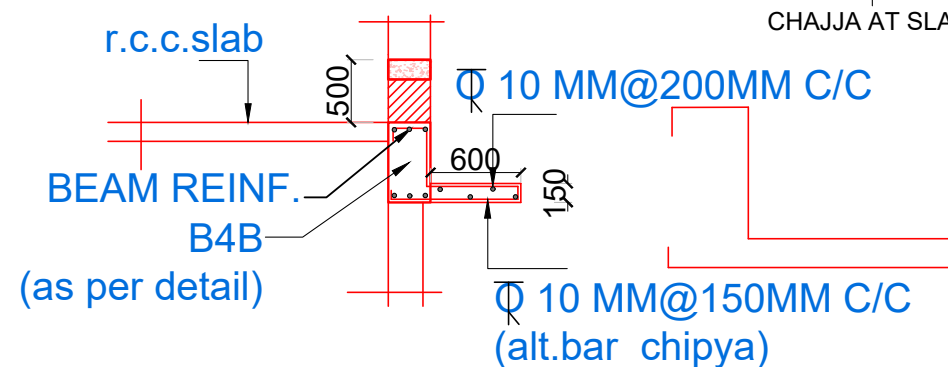
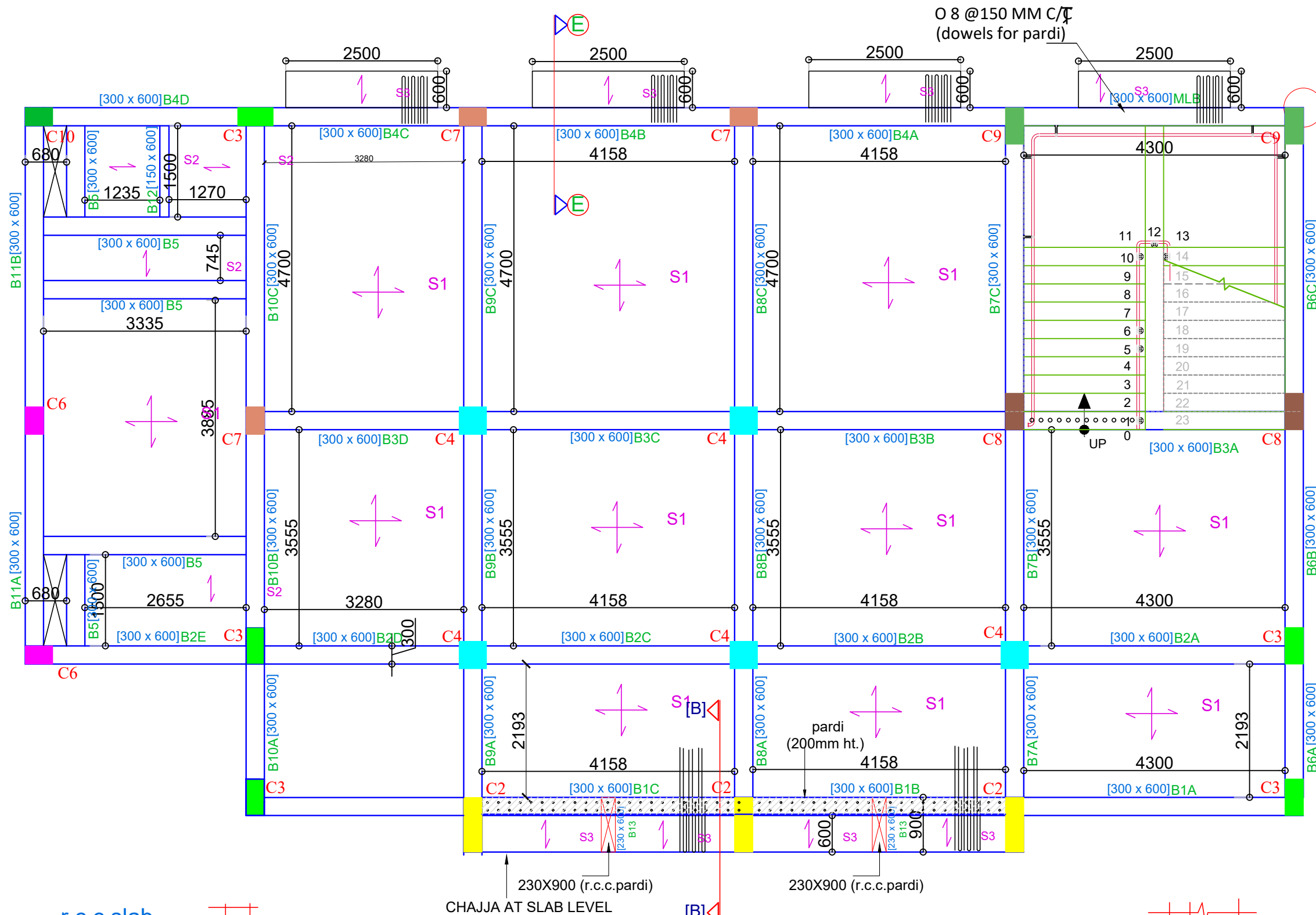


DHARMENDRA B. SHAH
B.E. (civil), AMIE, FIV, MACI, CE, PVA (I), IIV.
OFF :- "GAUTAM SMRUTI", JAIN SOCIETY, NR.FUVARA, NAVSARI. 396445.
PHONE :- (O.) 02637 237537.(M.) 098251 18824
MAIL ID: steelcrete2006@gmail.com



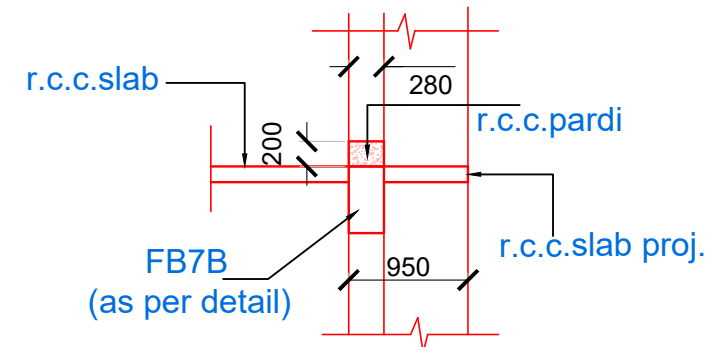
architecture . interiors . events
ARG Creation Pvt. Ltd.
101-102 Maurya Atria, Opp. Atithi Dining Hall, Judge's Bungalow Road, Ahmedabad - 380 015
Tel: +91-079-2687 2377, +91-079-3511 7677, E-mail: argcreation@hotmail.com

TITLE:- THARA LIBRARY	
SCHEDULE OF R.C.C GROUND & PLINTH BEAM DRAWING	
STRUCTURAL DRAWING	DRG. NO.
DATE:- 17-04-2026	STR-06 R0
SCALE:- N.T.S	
DRAWN BY :- VIPUL	
CHECKED BY :- VIPUL	



SECTION AT -EE

FIRST SLAB BEAM



SECTION AT -BB

NOTES :

- THIS DRAWING IS THE PROPERTY OF ARCHITECTS ARG Creation Pvt. Ltd. AND CANNOT BE REPRODUCED, TRACED OR USED FOR ANY PURPOSE OTHER THAN THE SPECIFIC JOB AGAINST & FOR WHICH IT IS ISSUED, WITHOUT THEIR PRIOR WRITTEN PERMISSION.
- THE CONTRACTOR MUST VERIFY ALL THE DIMENSIONS ON THE JOB AND REPORT ANY DISCREPANCIES TO THE ARCHITECTS.
- DONOT SCALE THE DRAWING.
- FOLLOW FIGURED DIMENSIONS ONLY.
- FOR BUILDING LAYOUT, REFER ARCHITECTURAL DRAWINGS AND CORRESPONDING SERVICES DRAWINGS.
- THIS DRAWING SUPERSEDS ALL DRAWINGS.
- PLEASE REFER DRAWING NO: STR-01 & STR-02 OF THIS PROJECT

NO.	DATE	REMARKS
R2	-	-
R1	-	-

REVISION

TENDER COPY

OWNER :
SPORTS AUTHORITY OF GUJARAT - PIU
PROJECT : CONSTRUCTION OF NAGAR PALIKA LIBRARY, AT - THARA, DIST - BANASKANTHA

CONSULTANT :



DHARMENDRA B. SHAH

B.E. (civil), AMIE, FIV, MACI, CE, PVA (I), IIV.
OFF :- "GAUTAM SMRUTI", JAIN SOCIETY, NR.FUVARA, NAVSARI. 396445.
PHONE :- (O.) 02637 237537.(M.) 098251 18824
MAIL ID: steelcrete2006@gmail.com



architecture . interiors . events
ARG Creation Pvt. Ltd.

101-102 Maurya Atria, Opp. Atithi Dining Hall, Judge's Bungalow Road, Ahmedabad - 380 015
Tel: +91-079-2687 2377, +91-079-3511 7677, E-mail: argcreation@hotmail.com

TITLE:- THARA LIBRARY	DRG. NO. STR-07 R0
DETAIL OF R.C.C FIRST SLAB BEAM DRAWING	
STRUCTURAL DRAWING	
DATE:- 17-04-2026	
SCALE:- N.T.S	
DRAWN BY :- VIPUL	
CHECKED BY :- VIPUL	

SCHEDULE OF FIRST SLAB BEAM :-(M:25)										
BEAM MARKED	SIZE		REINFORCEMENT AT BOTTOM		REINFORCEMENT AT TOP			STIRRUPS		REMARK
	WIDTH B mm	DEPTH D mm	STRAIGHT	EXTRA AT MID SPAN(L/2)	STRAIGHT	EXTRA TOP L/4 (LEFT).	EXTRA TOP L/4 (RIGHT).	AT SUPPORT (\$1)	AT SPAN (\$2)	
B1A	300	600	3 \varnothing 12	————	3 \varnothing 12	2 \varnothing 12	2 \varnothing 16	\varnothing 8 @100MMC/C	\varnothing 8 @150MMC/C	————
B1B	300	600	3 \varnothing 12	2 \varnothing 12	3 \varnothing 12	2 \varnothing 16	2 \varnothing 16	\varnothing 8 @100MMC/C	\varnothing 8 @150MMC/C	————
B1C	300	600	3 \varnothing 12	2 \varnothing 12	3 \varnothing 12	2 \varnothing 16	2 \varnothing 16	\varnothing 8 @100MMC/C	\varnothing 8 @150MMC/C	————
B2A	300	600	2 \varnothing 16 + 1 \varnothing 12	————	2 \varnothing 16 + 1 \varnothing 12	2 \varnothing 16	2 \varnothing 16	\varnothing 8 @100MMC/C	\varnothing 8 @150MMC/C	————
B2B	300	600	2 \varnothing 16 + 1 \varnothing 12	————	2 \varnothing 16 + 1 \varnothing 12	2 \varnothing 16	2 \varnothing 16	\varnothing 8 @100MMC/C	\varnothing 8 @150MMC/C	————
B2C	300	600	2 \varnothing 16 + 1 \varnothing 12	————	2 \varnothing 16 + 1 \varnothing 12	2 \varnothing 16	2 \varnothing 16	\varnothing 8 @100MMC/C	\varnothing 8 @150MMC/C	————
B2D	300	600	2 \varnothing 16 + 1 \varnothing 12	————	2 \varnothing 16 + 1 \varnothing 12	2 \varnothing 16	2 \varnothing 16	\varnothing 8 @100MMC/C	\varnothing 8 @150MMC/C	————
B2E	300	600	2 \varnothing 16 + 1 \varnothing 12	————	2 \varnothing 16 + 1 \varnothing 12	2 \varnothing 16	2 \varnothing 16	\varnothing 8 @100MMC/C	\varnothing 8 @150MMC/C	————
B3A	300	600	2 \varnothing 16 + 1 \varnothing 12	————	2 \varnothing 16 + 1 \varnothing 12	2 \varnothing 16	2 \varnothing 16	\varnothing 8 @100MMC/C	\varnothing 8 @150MMC/C	————
B3B	300	600	2 \varnothing 16 + 1 \varnothing 12	————	2 \varnothing 16 + 1 \varnothing 12	2 \varnothing 16	2 \varnothing 20	\varnothing 8 @100MMC/C	\varnothing 8 @150MMC/C	————
B3C	300	600	2 \varnothing 16 + 1 \varnothing 12	————	2 \varnothing 16 + 1 \varnothing 12	2 \varnothing 20	2 \varnothing 20	\varnothing 8 @100MMC/C	\varnothing 8 @150MMC/C	————
B3D	300	600	2 \varnothing 16 + 1 \varnothing 12	————	2 \varnothing 16 + 1 \varnothing 12	2 \varnothing 20	2 \varnothing 16	\varnothing 8 @100MMC/C	\varnothing 8 @150MMC/C	————
MLB	300	600	3 \varnothing 16	————	3 \varnothing 16	2 \varnothing 16	2 \varnothing 16	\varnothing 8 @100MMC/C	\varnothing 8 @100MMC/C	————
4A	300	600	3 \varnothing 16	————	3 \varnothing 16	3 \varnothing 16	3 \varnothing 16	\varnothing 8 @100MMC/C	\varnothing 8 @150MMC/C	————
4B	300	600	3 \varnothing 16	————	3 \varnothing 16	2 \varnothing 16	2 \varnothing 16	\varnothing 8 @100MMC/C	\varnothing 8 @150MMC/C	————
4C	300	600	2 \varnothing 16 + 1 \varnothing 12	————	2 \varnothing 16 + 1 \varnothing 12	2 \varnothing 16	2 \varnothing 12	\varnothing 8 @100MMC/C	\varnothing 8 @150MMC/C	————
4D	300	600	2 \varnothing 16 + 1 \varnothing 12	————	2 \varnothing 16 + 1 \varnothing 12	2 \varnothing 12	2 \varnothing 12	\varnothing 8 @100MMC/C	\varnothing 8 @150MMC/C	————
B5	300	600	3 \varnothing 12	————	3 \varnothing 12	————	————	\varnothing 8 @150MMC/C	\varnothing 8 @150MMC/C	————
B6A	300	600	3 \varnothing 16	————	3 \varnothing 16	————	2 \varnothing 16	\varnothing 8 @100MMC/C	\varnothing 8 @100MMC/C	————
B6B	300	600	3 \varnothing 16	————	3 \varnothing 16	2 \varnothing 16	2 \varnothing 16	\varnothing 8 @100MMC/C	\varnothing 8 @150MMC/C	————
B6C	300	600	3 \varnothing 16	————	3 \varnothing 16	2 \varnothing 16	2 \varnothing 16	\varnothing 8 @100MMC/C	\varnothing 8 @150MMC/C	————
B7A	300	600	3 \varnothing 16 + 2 \varnothing 16	————	3 \varnothing 16	2 \varnothing 16	2 \varnothing 20	\varnothing 8 @100MMC/C	\varnothing 8 @100MMC/C	————
B7B	300	600	3 \varnothing 16	————	3 \varnothing 16	2 \varnothing 20	2 \varnothing 16	\varnothing 8 @100MMC/C	\varnothing 8 @150MMC/C	————
B7C	300	600	3 \varnothing 16	————	3 \varnothing 16	2 \varnothing 16	2 \varnothing 16	\varnothing 8 @100MMC/C	\varnothing 8 @150MMC/C	————
B8A	300	600	3 \varnothing 16	————	3 \varnothing 16	————	2 \varnothing 16	\varnothing 8 @100MMC/C	\varnothing 8 @150MMC/C	————
B8B	300	600	3 \varnothing 16	————	3 \varnothing 16	2 \varnothing 16	2 \varnothing 16	\varnothing 8 @100MMC/C	\varnothing 8 @150MMC/C	————
B8C	300	600	3 \varnothing 16	————	3 \varnothing 16	2 \varnothing 16	2 \varnothing 16	\varnothing 8 @100MMC/C	\varnothing 8 @150MMC/C	————
B9A	300	600	3 \varnothing 16	————	3 \varnothing 16	2 \varnothing 16	2 \varnothing 16	\varnothing 8 @100MMC/C	\varnothing 8 @150MMC/C	————
B9B	300	600	3 \varnothing 16	————	3 \varnothing 16	2 \varnothing 16	2 \varnothing 16	\varnothing 8 @100MMC/C	\varnothing 8 @150MMC/C	————
B9C	300	600	3 \varnothing 16	————	3 \varnothing 16	2 \varnothing 16	2 \varnothing 16	\varnothing 8 @100MMC/C	\varnothing 8 @150MMC/C	————
B10A	300	600	3 \varnothing 16	————	3 \varnothing 16	2 \varnothing 16	2 \varnothing 20	\varnothing 8 @100MMC/C	\varnothing 8 @100MMC/C	————
B10B	300	600	3 \varnothing 16	————	3 \varnothing 16	2 \varnothing 20	2 \varnothing 16	\varnothing 8 @100MMC/C	\varnothing 8 @100MMC/C	————
B11A	300	600	3 \varnothing 16	2 \varnothing 12	3 \varnothing 16	2 \varnothing 16	2 \varnothing 20	\varnothing 8 @100MMC/C	\varnothing 8 @100MMC/C	————
B11B	300	600	3 \varnothing 16	2 \varnothing 12	3 \varnothing 16	2 \varnothing 20	2 \varnothing 16	\varnothing 8 @100MMC/C	\varnothing 8 @100MMC/C	————
B12	150	600	2 \varnothing 12	————	2 \varnothing 12	————	————	\varnothing 8 @150MMC/C	\varnothing 8 @150MMC/C	————
B13	230	600	3 \varnothing 16	————	4 \varnothing 16	————	————	\varnothing 8 @100MMC/C	\varnothing 8 @100MMC/C	CANTI. BEAM

SCHEDULE OF FIRST SLAB :-(M:25)							
SLAB MARKED	SLAB THICK	SLAB TYPE	MAIN STEEL	DISTRIBUTION STEEL / MAIN STEEL	EXTRA AT SUPPORT		REMARKS
					SHORT SPAN	LONG SPAN	
S1	150	TWO WAY	\varnothing 10 MM @ 150MM C/C (alt.bar bent up)	\varnothing 10 MM @ 150MM C/C (alt.bar bent up)	\varnothing 10 @ 300MM C/C	\varnothing 10 @ 300MM C/C	————
S2	150	ONE WAY	\varnothing 10 MM @ 150MM C/C (alt.bar bent up)	\varnothing 10 MM @ 200MM C/C	\varnothing 10 @ 300MM C/C	————	————
S3	125	ONE WAY (ALT.CHIPYA)	\varnothing 10 MM @ 150MM C/C (alt.bar chipya)	\varnothing 10 MM @ 200MM C/C	————	————	————

NOTES :

- THIS DRAWING IS THE PROPERTY OF ARCHITECTS ARG Creation Pvt. Ltd. AND CANNOT BE REPRODUCED, TRACED OR USED FOR ANY PURPOSE OTHER THAN THE SPECIFIC JOB AGAINST & FOR WHICH IT IS ISSUED, WITHOUT THEIR PRIOR WRITTEN PERMISSION.
- THE CONTRACTOR MUST VERIFY ALL THE DIMENSIONS ON THE JOB AND REPORT ANY DISCREPANCIES TO THE ARCHITECTS.
- DONOT SCALE THE DRAWING.
- FOLLOW FIGURED DIMENSIONS ONLY.
- FOR BUILDING LAYOUT, REFER ARCHITECTURAL DRAWINGS AND CORRESPONDING SERVICES DRAWINGS.
- THIS DRAWING SUPERSEDS ALL DRAWINGS.
- PLEASE REFER DRAWING NO: STR-01 & STR-02 OF THIS PROJECT

NO.	DATE	REMARKS
R2	-	-
R1		

R E V I S I O N

TENDER COPY

OWNER :
SPORTS AUTHORITY OF GUJARAT - PIU
PROJECT : CONSTRUCTION OF NAGAR PALIKA LIBRARY,AT -THARA ,DIST - BANASKANTHA

CONSULTANT :

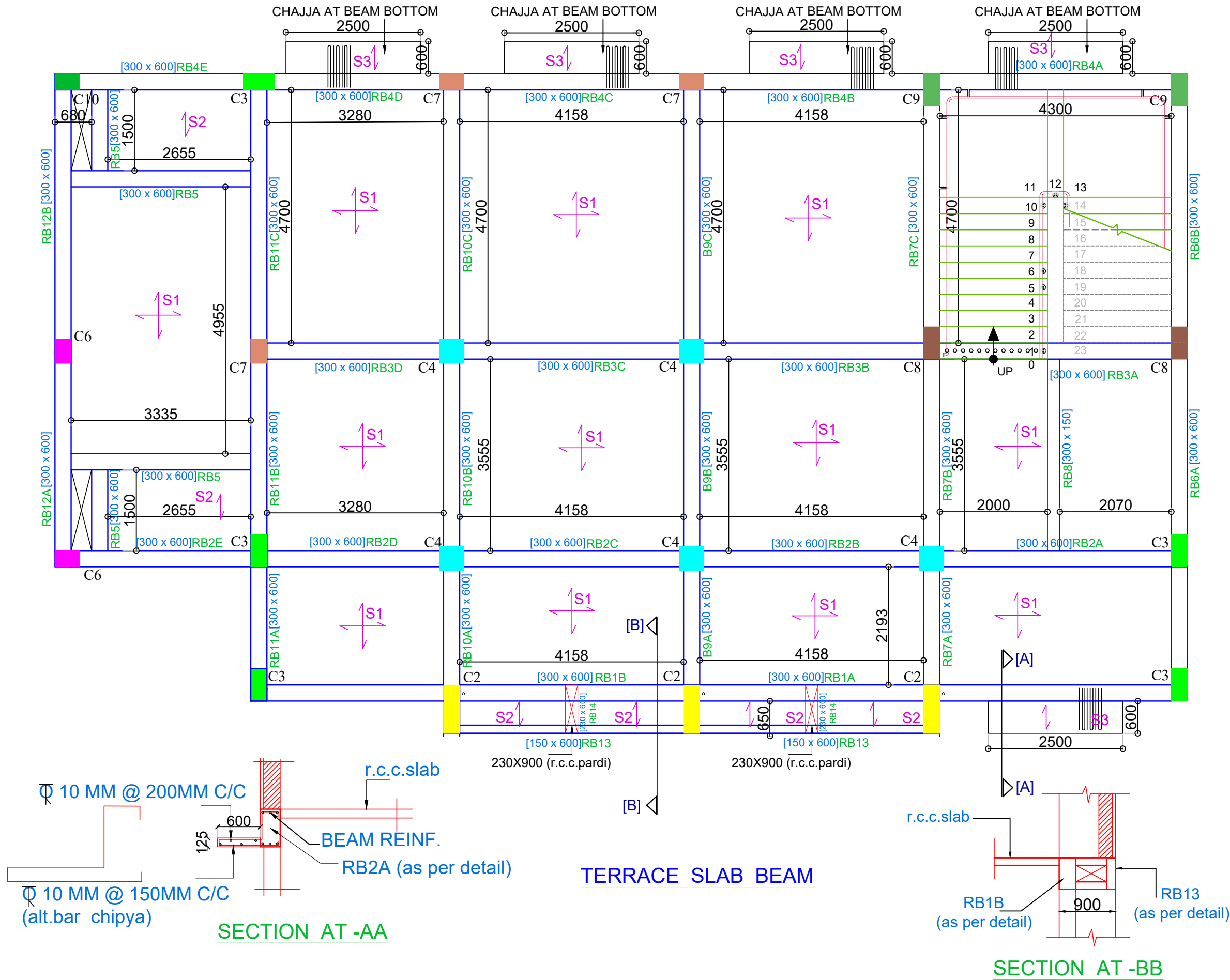


DHARMENDRA B. SHAH
B.E. (civil), AMIE, FIV, MACI, CE, PVA (I), IIV.
OFF :- "GAUTAM SMRUTI", JAIN SOCIETY, NR.FUVARA, NAVSARI. 396445.
PHONE :- (O.) 02637 237537.(M.) 098251 18824
MAIL ID: steelcrete2006@gmail.com



architecture . interiors . events
ARG Creation Pvt. Ltd.
101-102 Maurya Atria, Opp. Atithi Dining Hall, Judge's Bungalow Road, Ahmedabad - 380 015
Tel: +91-079-2687 2377, +91-079-3511 7677, E-mail: argcreation@hotmail.com

TITLE:- THARA LIBRARY	
SCHEDULE OF R.C.C FIRST SLAB BEAM DRAWING	
STRUCTURAL DRAWING	DRG. NO.
DATE:- 17-04-2026	STR-08 R0
SCALE:- N.T.S	
DRAWN BY :- VIPUL	
CHECKED BY :- VIPUL	



- NOTES :
1. THIS DRAWING IS THE PROPERTY OF ARCHITECTS ARG Creation Pvt. Ltd. AND CANNOT BE REPRODUCED, TRACED OR USED FOR ANY PURPOSE OTHER THAN THE SPECIFIC JOB AGAINST & FOR WHICH IT IS ISSUED, WITHOUT THEIR PRIOR WRITTEN PERMISSION.
 2. THE CONTRACTOR MUST VERIFY ALL THE DIMENSIONS ON THE JOB AND REPORT ANY DISCREPANCIES TO THE ARCHITECTS.
 3. DONOT SCALE THE DRAWING.
 4. FOLLOW FIGURED DIMENSIONS ONLY.
 5. FOR BUILDING LAYOUT, REFER ARCHITECTURAL DRAWINGS AND CORRESPONDING SERVICES DRAWINGS.
 6. THIS DRAWING SUPERSEDES ALL DRAWINGS.
 7. PLEASE REFER DRAWING NO: STR-01 & STR-02 OF THIS PROJECT

NO.	DATE	REMARKS
R2	-	-
R1		

R E V I S I O N	
TENDER COPY	

OWNER :
SPORTS AUTHORITY OF GUJARAT - PIU

PROJECT : CONSTRUCTION OF NAGAR PALIKA
LIBRARY,AT -THARA ,DIST - BANASKANTHA

CONSULTANT :



STEELCRETE
Consulting Structural Engineer & Govt. App. Valuer

DHARMENDRA B. SHAH
B.E. (civil), AMIE, FIV, MACI, CE, PVA (I), IIV.
OFF :- "GAUTAM SMRUTI", JAIN SOCIETY, NR.FUVARA,
NAVSARI. 396445.
PHONE :- (O.) 02637 237537.(M.) 098251 18824
MAIL ID: steelcrete2006@gmail.com

ARG
architecture . interiors . events
ARG Creation Pvt. Ltd.
101-102 Maurya Atria, Opp. Atithi Dining Hall, Judge's Bungalow Road, Ahmedabad - 380 015
Tel: +91-079-2687 2377, +91-079-3511 7677, E-mail: argcreation@hotmail.com

TITLE:- THARA LIBRARY	
DETAIL OF R.C.C TERRACE SLAB BEAM DRAWING	
STRUCTURAL DRAWING	DRG. NO.
DATE:- 17-04-2026	STR-09 R0
SCALE:- N.T.S	
DRAWN BY :- VIPUL	
CHECKED BY :- VIPUL	

SCHEDULE OF TERRACE SLAB BEAM :-(M:25)										
BEAM MARKED	SIZE		REINFORCEMENT AT BOTTOM		REINFORCEMENT AT TOP			STIRRUPS		REMARK
	WIDTH B mm	DEPTH D mm	STRAIGHT	EXTRA AT MID SPAN(L/2)	STRAIGHT	EXTRA TOP L/4 (LEFT).	EXTRA TOP L/4 (RIGHT).	AT SUPPORT (\$1)	AT SPAN (\$2)	
RB1A	300	600	3 \varnothing 12	2 \varnothing 12	3 \varnothing 12	2 \varnothing 12	2 \varnothing 12	\varnothing 8 @100MMC/C	\varnothing 8 @100MMC/C	——
RB1B	300	600	3 \varnothing 12	2 \varnothing 12	3 \varnothing 12	2 \varnothing 12	2 \varnothing 12	\varnothing 8 @100MMC/C	\varnothing 8 @100MMC/C	——
RB2A	300	600	3 \varnothing 12	2 \varnothing 12	3 \varnothing 12	2 \varnothing 12	2 \varnothing 12	\varnothing 8 @100MMC/C	\varnothing 8 @100MMC/C	——
RB2B	300	600	3 \varnothing 12	——	3 \varnothing 12	2 \varnothing 12	2 \varnothing 12	\varnothing 8 @100MMC/C	\varnothing 8 @150MMC/C	——
RB2C	300	600	3 \varnothing 12	——	3 \varnothing 12	2 \varnothing 12	2 \varnothing 12	\varnothing 8 @100MMC/C	\varnothing 8 @150MMC/C	——
RB2D	300	600	3 \varnothing 12	——	3 \varnothing 12	2 \varnothing 12	2 \varnothing 12	\varnothing 8 @100MMC/C	\varnothing 8 @150MMC/C	——
RB2E	300	600	3 \varnothing 12	——	3 \varnothing 12	2 \varnothing 12	2 \varnothing 12	\varnothing 8 @100MMC/C	\varnothing 8 @150MMC/C	——
RB3A	300	600	3 \varnothing 12	2 \varnothing 16	3 \varnothing 12	2 \varnothing 16	3 \varnothing 16	\varnothing 8 @100MMC/C	\varnothing 8 @100MMC/C	——
RB3B	300	600	3 \varnothing 12	——	3 \varnothing 12	2 \varnothing 16	2 \varnothing 12	\varnothing 8 @100MMC/C	\varnothing 8 @150MMC/C	——
RB3C	300	600	3 \varnothing 12	——	3 \varnothing 12	2 \varnothing 12	2 \varnothing 12	\varnothing 8 @100MMC/C	\varnothing 8 @150MMC/C	——
RB3D	300	600	3 \varnothing 12	2 \varnothing 16	3 \varnothing 12	2 \varnothing 12	2 \varnothing 12	\varnothing 8 @100MMC/C	\varnothing 8 @150MMC/C	——
RB4A	300	600	3 \varnothing 12	2 \varnothing 12	3 \varnothing 12	2 \varnothing 16	2 \varnothing 16	\varnothing 8 @100MMC/C	\varnothing 8 @150MMC/C	——
RB4B	300	600	3 \varnothing 12	——	3 \varnothing 12	2 \varnothing 16	2 \varnothing 12	\varnothing 8 @100MMC/C	\varnothing 8 @150MMC/C	——
RB4C	300	600	3 \varnothing 12	——	3 \varnothing 12	2 \varnothing 12	2 \varnothing 12	\varnothing 8 @100MMC/C	\varnothing 8 @150MMC/C	——
RB4D	300	600	3 \varnothing 12	——	3 \varnothing 12	2 \varnothing 12	2 \varnothing 12	\varnothing 8 @100MMC/C	\varnothing 8 @150MMC/C	——
RB4E	300	600	3 \varnothing 12	——	3 \varnothing 12	2 \varnothing 12	2 \varnothing 12	\varnothing 8 @100MMC/C	\varnothing 8 @150MMC/C	——
RB5	300	600	3 \varnothing 12	——	3 \varnothing 12	——	——	\varnothing 8 @150MMC/C	\varnothing 8 @150MMC/C	——
RB6A	300	600	3 \varnothing 16	——	3 \varnothing 16	2 \varnothing 16	2 \varnothing 16	\varnothing 8 @100MMC/C	\varnothing 8 @150MMC/C	——
RB6B	300	600	3 \varnothing 16	——	3 \varnothing 16	2 \varnothing 16	2 \varnothing 16	\varnothing 8 @100MMC/C	\varnothing 8 @150MMC/C	——
RB7A	300	600	3 \varnothing 16	——	3 \varnothing 16	2 \varnothing 16	2 \varnothing 20	\varnothing 8 @100MMC/C	\varnothing 8 @100MMC/C	——
RB7B	300	600	3 \varnothing 16	——	3 \varnothing 16	2 \varnothing 20	2 \varnothing 20	\varnothing 8 @100MMC/C	\varnothing 8 @150MMC/C	——
RB7C	300	600	3 \varnothing 16	——	3 \varnothing 16	2 \varnothing 20	2 \varnothing 20	\varnothing 8 @100MMC/C	\varnothing 8 @150MMC/C	——
RB8	300	150	3 \varnothing 12	——	3 \varnothing 12	——	——	\varnothing 8 @150MMC/C	\varnothing 8 @150MMC/C	HIDDEN BEAM
RB9A	300	600	3 \varnothing 16	——	3 \varnothing 16	2 \varnothing 16	2 \varnothing 16	\varnothing 8 @100MMC/C	\varnothing 8 @100MMC/C	——
RB9B	300	600	3 \varnothing 16	——	3 \varnothing 16	2 \varnothing 16	2 \varnothing 16	\varnothing 8 @100MMC/C	\varnothing 8 @150MMC/C	——
RB9C	300	600	3 \varnothing 16	——	3 \varnothing 16	2 \varnothing 16	2 \varnothing 16	\varnothing 8 @100MMC/C	\varnothing 8 @150MMC/C	——
RB10A	300	600	2 \varnothing 16 + 1 \varnothing 12	——	2 \varnothing 16 + 1 \varnothing 12	2 \varnothing 16	2 \varnothing 16	\varnothing 8 @100MMC/C	\varnothing 8 @150MMC/C	——
RB10B	300	600	2 \varnothing 16 + 1 \varnothing 12	——	2 \varnothing 16 + 1 \varnothing 12	2 \varnothing 16	2 \varnothing 16	\varnothing 8 @100MMC/C	\varnothing 8 @150MMC/C	——
RB10C	300	600	2 \varnothing 16 + 1 \varnothing 12	——	2 \varnothing 16 + 1 \varnothing 12	2 \varnothing 16	2 \varnothing 16	\varnothing 8 @100MMC/C	\varnothing 8 @150MMC/C	——
RB11A	300	600	3 \varnothing 12	——	3 \varnothing 12	2 \varnothing 12	2 \varnothing 12	\varnothing 8 @100MMC/C	\varnothing 8 @100MMC/C	——
RB11B	300	600	3 \varnothing 12	——	3 \varnothing 12	2 \varnothing 12	2 \varnothing 12	\varnothing 8 @100MMC/C	\varnothing 8 @100MMC/C	——
RB12A	300	600	3 \varnothing 12	——	3 \varnothing 12	2 \varnothing 12	2 \varnothing 12	\varnothing 8 @100MMC/C	\varnothing 8 @100MMC/C	——
RB12B	300	600	3 \varnothing 12	——	3 \varnothing 12	2 \varnothing 12	2 \varnothing 12	\varnothing 8 @100MMC/C	\varnothing 8 @100MMC/C	——
RB13	150	600	2 \varnothing 16	——	2 \varnothing 12	——	——	\varnothing 8 @100MMC/C	\varnothing 8 @100MMC/C	——
RB14	230	600	3 \varnothing 16	——	4 \varnothing 16	——	——	\varnothing 8 @100MMC/C	\varnothing 8 @100MMC/C	CANTI. BEAM

SCHEDULE OF SECOND (TERRACE) SLAB :-(M:25)							
SLAB MARKED	SLAB THICK	SLAB TYPE	MAIN STEEL	DISTRIBUTION STEEL / MAIN STEEL	EXTRA AT SUPPORT		REMARKS
					SHORT SPAN	LONG SPAN	
S1	150	TWO WAY	\varnothing 10 MM @ 150MM C/C (alt.bar bent up)	\varnothing 10 MM @ 150MM C/C (alt.bar bent up)	\varnothing 10 @ 300MM C/C	\varnothing 10 @ 300MM C/C	——
S2	150	ONE WAY	\varnothing 10 MM @ 150MM C/C (alt.bar bent up)	\varnothing 10 MM @ 200MM C/C	\varnothing 10 @ 300MM C/C	——	——
S3	125	ONE WAY (ALT.CHIPYA)	\varnothing 10 MM @ 150MM C/C (alt.bar chipya)	\varnothing 10 MM @ 200MM C/C	——	——	——

- NOTES :
1. THIS DRAWING IS THE PROPERTY OF ARCHITECTS ARG Creation Pvt. Ltd. AND CANNOT BE REPRODUCED, TRACED OR USED FOR ANY PURPOSE OTHER THAN THE SPECIFIC JOB AGAINST & FOR WHICH IT IS ISSUED, WITHOUT THEIR PRIOR WRITTEN PERMISSION.
 2. THE CONTRACTOR MUST VERIFY ALL THE DIMENSIONS ON THE JOB AND REPORT ANY DISCREPANCIES TO THE ARCHITECTS.
 3. DONOT SCALE THE DRAWING.
 4. FOLLOW FIGURED DIMENSIONS ONLY.
 5. FOR BUILDING LAYOUT, REFER ARCHITECTURAL DRAWINGS AND CORRESPONDING SERVICES DRAWINGS.
 6. THIS DRAWING SUPERSEDS ALL DRAWINGS.
 7. PLEASE REFER DRAWING NO: STR-01 & STR-02 OF THIS PROJECT

NO.	DATE	REMARKS
R2	-	-
R1		

R
E
V
I
S
I
O
N

TENDER COPY

OWNER :
SPORTS AUTHORITY OF GUJARAT - PIU


PROJECT : CONSTRUCTION OF NAGAR PALIKA LIBRARY,AT -THARA ,DIST - BANASKANTHA

CONSULTANT :



DHARMENDRA B. SHAH

B.E. (civil), AMIE, FIV, MACI, CE, PVA (I), IIV.
OFF :- "GAUTAM SMRUTI", JAIN SOCIETY, NR.FUVARA, NAVSARI. 396445.
PHONE :- (O.) 02637 237537.(M.) 098251 18824
MAIL ID: steelcrete2006@gmail.com



architecture . interiors . events

ARG Creation Pvt. Ltd.

101-102 Maurya Atria, Opp. Alithi Dining Hall, Judge's Bungalow Road, Ahmedabad - 380 015
Tel: +91-079-2687 2377, +91-079-3511 7677, E-mail: argcreation@hotmail.com

TITLE:- THARA LIBRARY

SCHEDULE OF R.C.C TERRACE SLAB BEAM DRAWING

STRUCTURAL DRAWING

DATE:- 17-04-2026

SCALE:- N.T.S

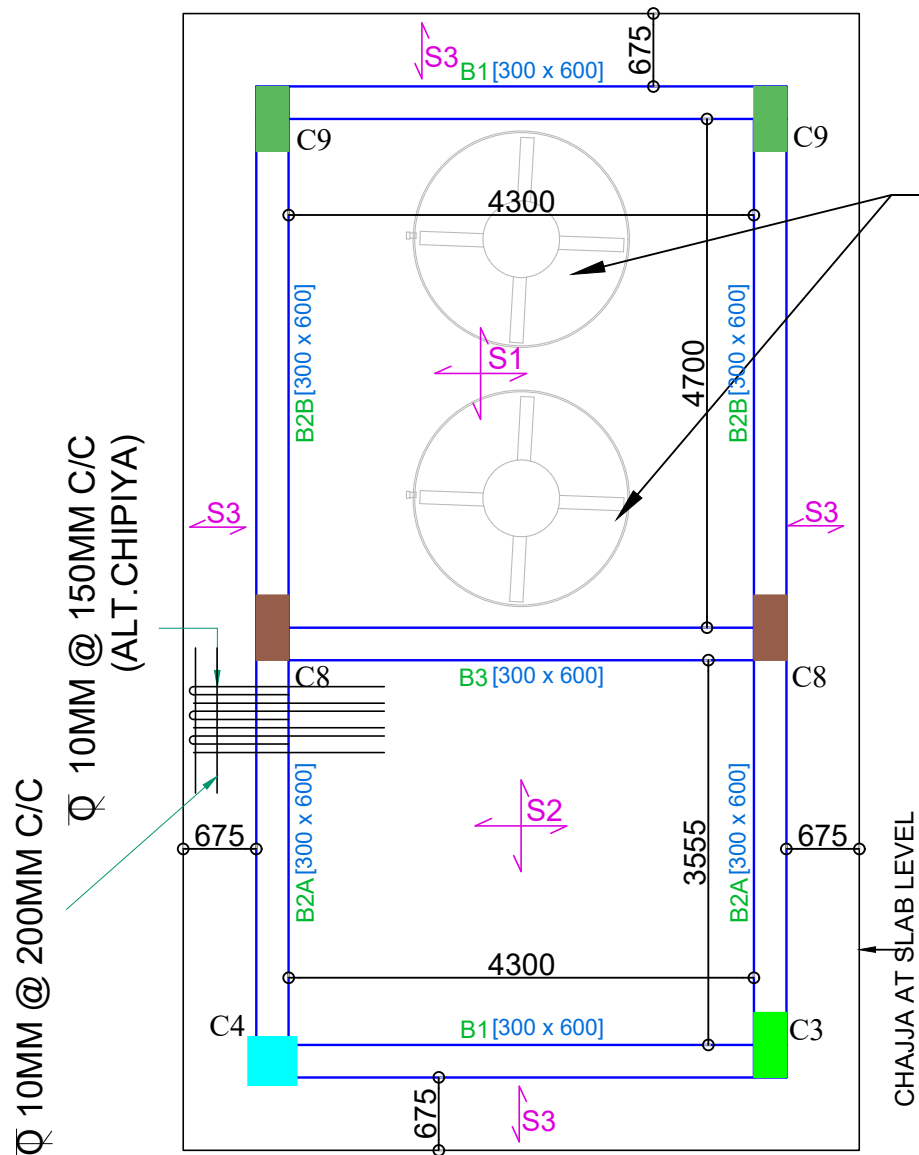
DRAWN BY :- VIPUL

CHECKED BY :- VIPUL

DRG. NO.

STR-10

R0

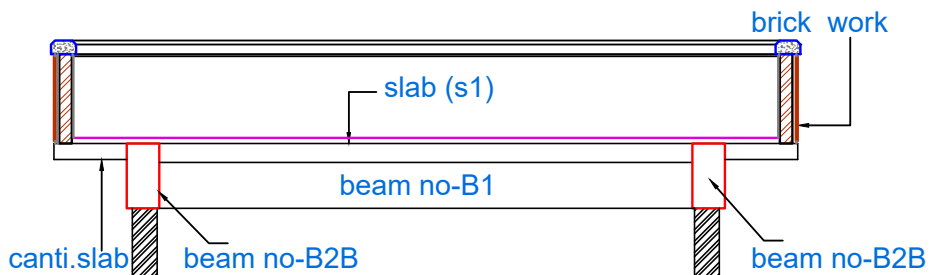
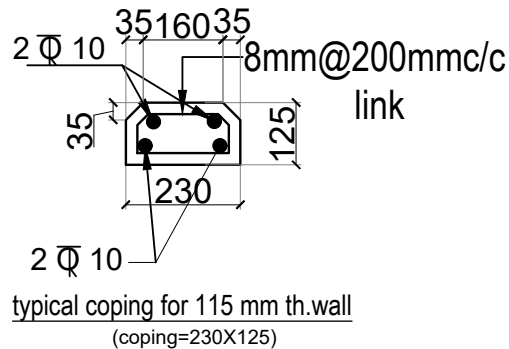


CABIN SLAB BEAM

SCHEDULE OF CABIN SLAB BEAM :-(M:25)										
BEAM MARKED	SIZE		REINFORCEMENT AT BOTTOM		REINFORCEMENT AT TOP			STIRRUPS		REMARK
	WIDTH B mm	DEPTH D mm	STRAIGHT	EXTRA AT MID SPAN(L/2)	STRAIGHT	EXTRA TOP L/4 (LEFT).	EXTRA TOP L/4 (RIGHT).	AT SUPPORT (S1)	AT SPAN (S2)	
B1	300	600	3 Ø 16	—	3 Ø 16	—	—	Ø 8 @100MMC/C	Ø 8 @100MMC/C	—
B2A	300	600	3 Ø 12	—	3 Ø 12	2 Ø 12	2 Ø 16	Ø 8 @100MMC/C	Ø 8 @100MMC/C	—
B2B	300	600	3 Ø 12	2 Ø 12	3 Ø 12	2 Ø 16	2 Ø 16	Ø 8 @100MMC/C	Ø 8 @150MMC/C	—
B3	300	600	3 Ø 16	—	3 Ø 16	2 Ø 16	2 Ø 16	Ø 8 @100MMC/C	Ø 8 @150MMC/C	—

SCHEDULE OF R.C.C CABIN BOTTOM SLAB :-(M:25)							
SLAB MARKED	SLAB THICK	SLAB TYPE	MAIN STEEL	DISTRIBUTION STEEL / MAIN STEEL	EXTRA AT SUPPORT		REMARKS
					SHORT SPAN	LONG SPAN	
S1	175	TWO WAY	Ø 10 MM @ 100MM C/C (alt.bar bent up)	Ø 10 MM @ 100MM C/C (alt.bar bent up)	Ø 10 @ 200MM C/C	Ø 10 @ 200MM C/C	—
S2	150	TWO WAY	Ø 10 MM @ 150MM C/C (alt.bar bent up)	Ø 10 MM @ 150MM C/C (alt.bar bent up)	Ø 10 @ 300MM C/C	Ø 10 @ 300MM C/C	—
S3	150	ONE WAY (ALT.CHIPIYA)	Ø 10 MM @ 150MM C/C	Ø 10 MM @ 200MM C/C	—	—	—

WATER TANK



SECTION AT -AA

NOTES :

1. THIS DRAWING IS THE PROPERTY OF ARCHITECTS ARG Creation Pvt. Ltd. AND CANNOT BE REPRODUCED, TRACED OR USED FOR ANY PURPOSE OTHER THAN THE SPECIFIC JOB AGAINST & FOR WHICH IT IS ISSUED, WITHOUT THEIR PRIOR WRITTEN PERMISSION.
2. THE CONTRACTOR MUST VERIFY ALL THE DIMENSIONS ON THE JOB AND REPORT ANY DISCREPANCIES TO THE ARCHITECTS.
3. DONOT SCALE THE DRAWING.
4. FOLLOW FIGURED DIMENSIONS ONLY.
5. FOR BUILDING LAYOUT, REFER ARCHITECTURAL DRAWINGS AND CORRESPONDING SERVICES DRAWINGS.
6. THIS DRAWING SUPERSEDES ALL DRAWINGS.
7. PLEASE REFER DRAWING NO: STR-01 & STR-02 OF THIS PROJECT

NO.	DATE	REMARKS
R2	-	-
R1		

R E V I S I O N

TENDER COPY

OWNER :

SPORTS AUTHORITY OF GUJARAT - PIU

PROJECT : CONSTRUCTION OF NAGAR PALIKA
LIBRARY,AT -THARA ,DIST - BANASKANTHA

CONSULTANT :



DHARMENDRA B. SHAH

B.E. (civil), AMIE, FIV, MACI, CE, PVA (I), IIV.
OFF :- "GAUTAM SMRUTI", JAIN SOCIETY, NR.FUVARA,
NAVSARI. 396445.

PHONE :- (O.) 02637 237537.(M.) 098251 18824
MAIL ID: steelcrete2006@gmail.com



architecture . interiors . events

ARG Creation Pvt. Ltd.

101-102 Maurya Atria, Opp. Atithi Dining Hall, Judge's Bungalow Road, Ahmedabad - 380 015
Tel: +91-079-2687 2377, +91-079-3511 7677, E-mail: argcreation@hotmail.com

TITLE:- THARA LIBRARY

DETAIL & SCHEDULE OF R.C.C CABIN SLAB BEAM

STRUCTURAL DRAWING		DRG. NO. STR-11 R0
DATE:-	17-04-2026	
SCALE:-	N.T.S	
DRAWN BY :- VIPUL		
CHECKED BY :- VIPUL		

GENERAL NOTES :-

1. STANDARD NOTES / DRAWINGS SUPPLIED WITH THIS DRAWINGS SHALL BE FOLLOWED THROUGH OUT THE PROJECT.
2. STRUCTRAL DRAWINGS SHALL BE READ IN ACCORDANCE WITH RELEVANT ARCHITECTURAL DRAWINGS/DETAILS.
3. ALL FORMWORKS & REUBFIRCEMENT SHALL BE CHECKED & VERIFIED FORM US BEFORE CONCRETING.
4. ALL CONCRETE MEMBERS SHALL BE CURED FOR MINIMUM SEVEN DAYS.
5. TOTAL NOS. OF BARS WHERE GIVEN PRECEDES THE MARK Ø (MILD STEEL) OR O (TOR STEEL).
6. MEASUREMENTS / DISTANCE SHOWN ON STRUCTUREMENTS DRAWINGS SHALL BE CHECKED & VERIFIED BY ARCHITECT BEFORE EXECUTION ON SITE.
7. ALL BEAM BARS SHALL HAVE MINIMUM 150 MM RIGHT ANGLE BENT AT THERE DISCONTINEOUS SUPPORTS.
8. COLUMN SHALL REGULAR SPACED STIRRUPS INSIDE JUNCTION OF BEAMS & COLUMNS.
9. STIRRIPING TIMES OF FORMWORK SHALL BE AS GIVEN BELOW.

(i) SLAB BOTTOM..... 7 DAYS

(ii) BEAM BOTTOM (SPAN < 5800MM).....14 DAYS

(iii) BEAM BOTTOM (SPAN > 5800MM).....21 DAYS

(iv) ALL VERTICAL SIDES OF FOOTING, COLUMNS, SLABS ETC.....28 HOURS
10. CLEAR CONCRETE COVER

(i) SLAB SIDES.....25mm

(ii) SLAB BOTTOM & TOP (UPTO 125 mmTHIK)..... 15mm

(iii) COLUMN SIDES (230 mm WIDE).....40mm

(iv) COLUMN SIDES (125 mm WIDE).....20mm

(v) BEAM TOP & BOTTOM.....25mm

(vi) BEAM SIDES (230 mm WIDE).....25mm

(vii) BEAM SIDES (150 mm WIDE)..... 15mm
11. LAPPING OF MAIN BARS.

COMPRESSIONS BARS = 45 x d ; WHERE, d=BARS DIA

TENSION BARS = 56 x d
12. IF LAPPING OF COLUMN BARS ARE NOT AT BEAM COLUMN JUNCTION EXTRA STIRRUPS SHALL BE PROVIDED AT SUCH LAP LENGTHS (NO. OF STIRRUPS SHALL BE DOUBLED)
13. LAPPING TO BEAM REINFORCEMENT SHALL BE AVOIDED AS FAR AS POSSIBLE. IF IT CAN NOT BE AVOIDED. THEY SHOULD BE STAGGERED AT LEASE BY A DISTANCE EQUAL TO 58 TIMES BAR DIA & ALSO AT ANY SECTION THE NOS BARS LAPPED SHALL NOT BE MORE THAN 50% OF THE BARS TO BE PROVIDED IN ANY BEAM OR ANY SPAN OF SLAB.

14. CONSTRUCTION JOINT SHALL BE HACKED & RICH CEMENT SLURRY SHALL BE APPLIED AT JOINT BEFORE POURING FRESH CONCRETE.
15. PROPER SUPPORTS (CHAIRS OR GHODAS) SHALL CANTILEAVER CONCRETE POSITION.
16. BATH & W.C. SUNK SLABS SHALL BE LOWERED DOWN AS PER ARCHITECTURAL DRAWING DETAILS.
17. M-15 MIX MEANS 1:2:4 BY VOLUME.

M-20 MIX MEANS 1:1.5:3 BY VOLUME.
18. ALL INVERTED BEAMS SHALL BE CASTED ON SAME DAY OF SLAB CASTING OR AT THE MOST NEXT DAY OF SLAB CASTING.
19. ALL CANTILEAVER SLABS & BEAMS SHALL BE CASTED WITH ATTACHED BEAMS IN SINGLE OPERATION. DO NOT KEEP DOWELS FOR SUCH SLAB & BEAMS.
20. ALL PARTITION BEAMS (115 mm, 150 mm) SHALL HAVE MAXIMUM 2 BARS PER LAYER.
21. SAFE BEARING CAPACITY (SBC) OF SOIL HAS BEEN CONSIDERED FOR DESIGN OF FOUNDATION AS 170 KN/SQM²AT 2.0 M DEPTH BELOW GROUND LEVEL,AS PER SBC REPORT REF NO: SMLC/SBC/1604150/2026
22. CONCRETE CUBETEST IS COMPULSARY AT EVERY CONCRETE STAGE. OTHERWISE STANDARD SAFETY OF CONCRETE AND ALL MEMBERS ARE RESPONSIBLE TO OWNER & CONTRACTOR.
23. IF THE SOIL STRATA IS NOT AVAILABLE FROM 2.50 M TO 3.00 M DEPTH FROM N.G.L,THEN PROVIDE 230MM RUBBLE SOILING, FILLING WITH SAND AND LIME (1:1) AND THEN AFTER 150 MM P.C.(1:3:6)
24. IN ANY CASE EXCAVATED BLACK SOIL/YELLOW SOIL MAY NOT BE USED FOR PLINTH REFILLING WORK.
25. ALL STRUCTURAL REINFORCED CONCRETE WORK BE WITH DESIGN MIX CONCRETE OF GRADE M25 UNLESS MENTIONED IN THE DESIGN DRAWING. PROPER MIX DESIGN AS PER IS CODE 10262 : 2009 SHALL BE DONE TO ACHIEVE PROPER CONCRETE GRADE. VIBRATORS SHALL BE USED WHILE CONCRETE PLACEMENT.
- 26.WE HAVE CONSIDERED SEISMIC ZONE III, IMPORTANCE FACTOR - 1.5
27. THE STRUCTURE IS DESIGNED AS PER IS 456:2000 AND IS 1893:2015
28. DUCTILE DETAILING IN THE STRUCTURE SHALL BE DONE AS PER IS 13920:1993

STAMP AND SIGN OF ENGINEERING COLLEGE

NOTES :

1. THIS DRAWING IS THE PROPERTY OF ARCHITECTS ARG Creation Pvt. Ltd. AND CANNOT BE REPRODUCED, TRACED OR USED FOR ANY PURPOSE OTHER THAN THE SPECIFIC JOB AGAINST & FOR WHICH IT IS ISSUED, WITHOUT THEIR PRIOR WRITTEN PERMISSION.
2. THE CONTRACTOR MUST VERIFY ALL THE DIMENSIONS ON THE JOB AND REPORT ANY DISCREPANCIES TO THE ARCHITECTS.
3. DONOT SCALE THE DRAWING.
4. FOLLOW FIGURED DIMENSIONS ONLY.
5. FOR BUILDING LAYOUT, REFER ARCHITECTURAL DRAWINGS AND CORRESPONDING SERVICES DRAWINGS.
6. THIS DRAWING SUPERSEDS ALL DRAWINGS.
7. PLEASE REFER DRAWING NO: STR-01 & STR-02 OF THIS PROJECT

NO.	DATE	REMARKS
R2	-	-
R1		

R E V I S I O N

TENDER COPY

OWNER :

SPORTS AUTHORITY OF GUJARAT - PIU

PROJECT : CONSTRUCTION OF NAGAR PALIKA LIBRARY,AT -THARA ,DIST - BANASKANTHA

CONSULTANT :



DHARMENDRA B. SHAH

B.E. (civil), AMIE, FIV, MACI, CE, PVA (I), IIV.
OFF :- "GAUTAM SMRUTI", JAIN SOCIETY, NR.FUVARA,
NAVSARI. 396445.

PHONE :- (O.) 02637 237537.(M.) 098251 18824
MAIL ID: steelcrete2006@gmail.com



architecture . interiors . events

ARG Creation Pvt. Ltd.

101-102 Maurya Atria, Opp. Atithi Dining Hall, Judge's Bungalow Road, Ahmedabad - 380 015
Tel: +91-079-2687 2377, +91-079-3511 7677, E-mail: argcreation@hotmail.com

TITLE:- THARA LIBRARY

TYPICAL GENERAL DETAIL DRG.

STRUCTURAL DRAWING	DRG. NO.
DATE:- 17-04-2026	STR-12 R0
SCALE:- N.T.S	
DRAWN BY :- VIPUL	
CHECKED BY :- VIPUL	